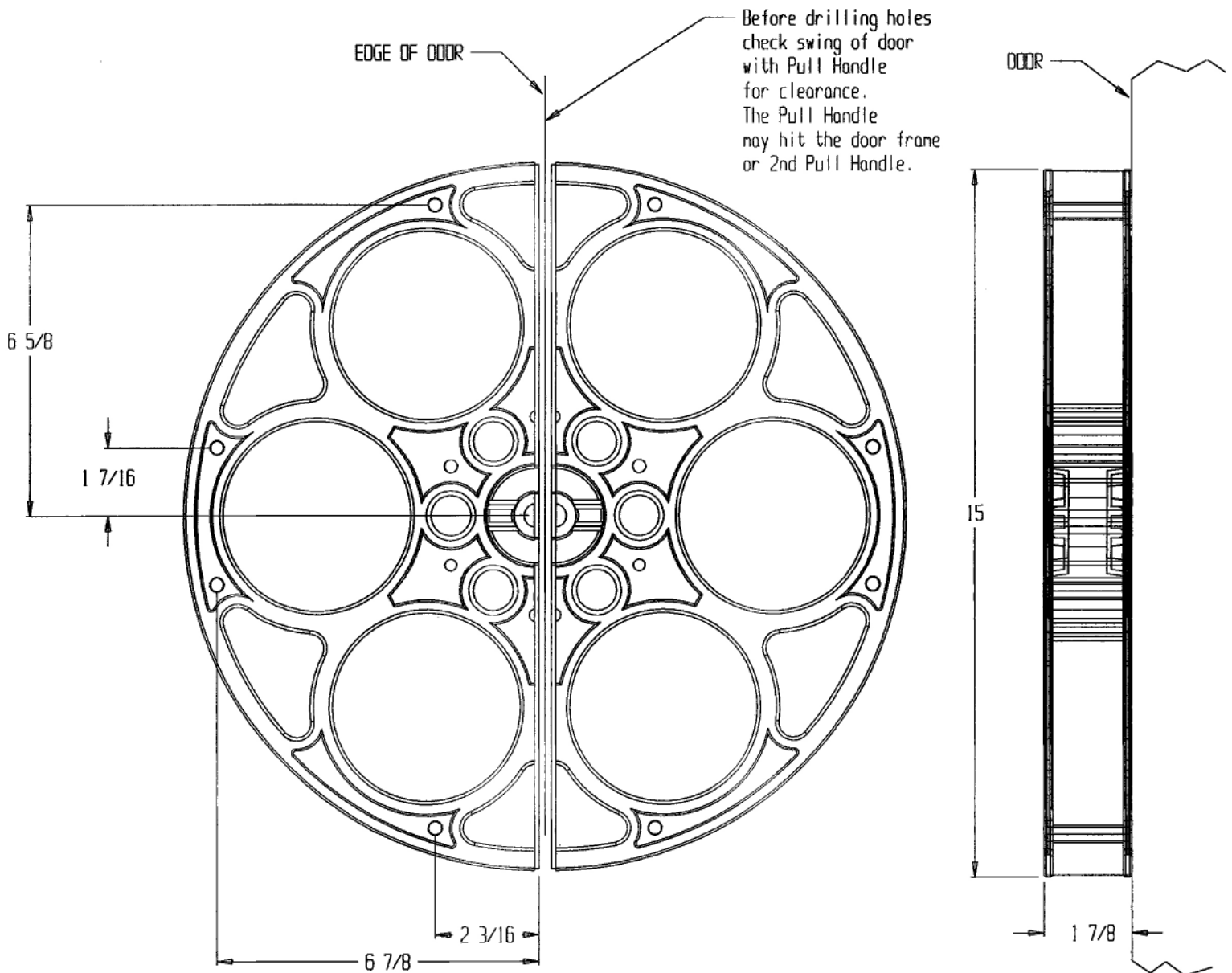


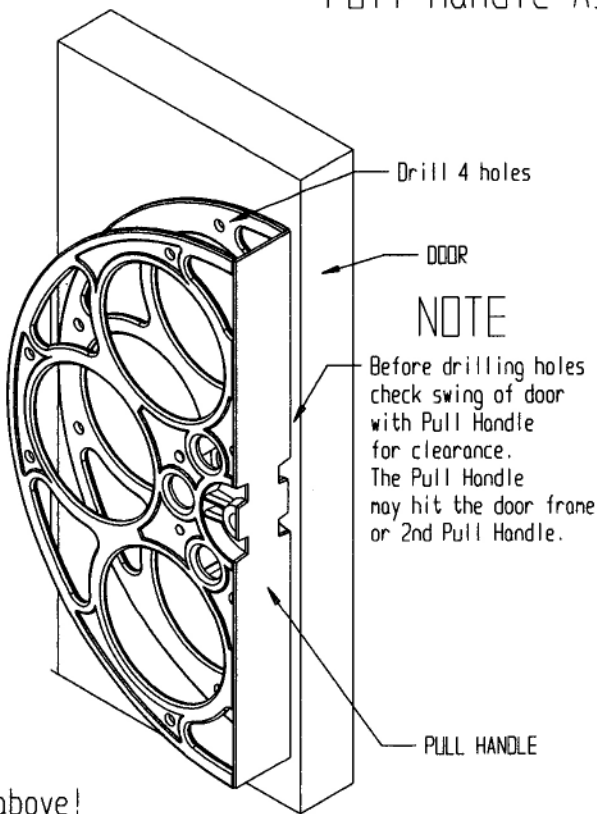
GOLDBERG BROTHERS MOVIE REEL PULL HANDLE SET

11-2009



DIMENSIONS USED ON THIS REEL PULL HANDLE DOCUMENT IS
AN APPROXIMATION DUE TO VARIATIONS IN MANUFACTURING.

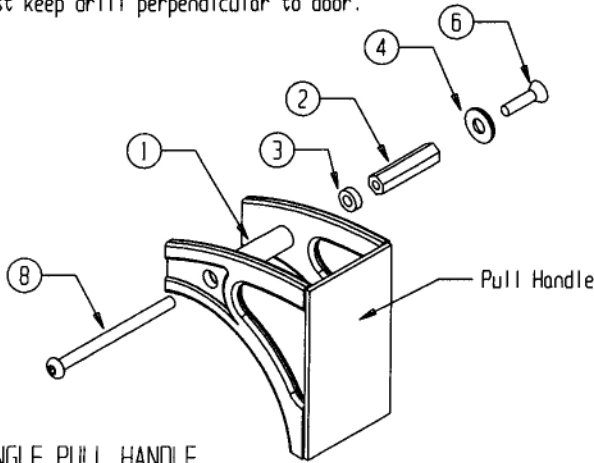
HARDWARE LIST



- ① Spacer, Round Tube 8x 1 1/2" Long
Used as a Spacer in the Reel
Same color as Pull Handle
- ② 10-32 Hex Nut 8x 1 1/4" long
Used inside Door to Screw
Assembly Together - Color clear
- ③ Spacer, Round Tube 8x 1/4" Long
Used as a Spacer in the Door for
1 3/4" Thick doors. Color black
- ④ Washer - Finishing Flat Head, 8x
Used with 10-32 x 3/4" Screw
Color clear
- ⑤ 10-24 x 3/4" Pan Head Screw 4x
Used on Panel Doors or Glass Doors
Used with Sex Bolt
- ⑥ 10-32 x 3/4" Flat Head Screw 8x
Used on Back Side of Door, without
a Pull Handle. Color clear
- ⑦ 10-24 Sex Bolt x 1 3/8 Long 4x
Used on Panel Doors or Glass Doors
Used with 10-24 Pan Head Screw
Color clear
- ⑧ 10-32 x 2 1/2" Pan Head Screw 8x
Used on Front Side thru Reel
into Door

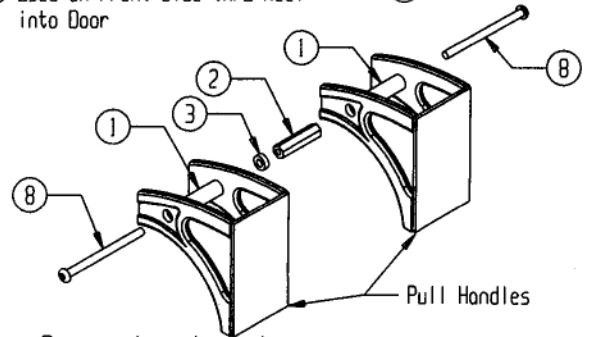
See note above!

Locate Pull Handle on Door. Clamp in place, and mark drilling holes. Remove Pull Handle, and drill four holes through door using a 3/8" drill bit. Must keep drill perpendicular to door.



SINGLE PULL HANDLE

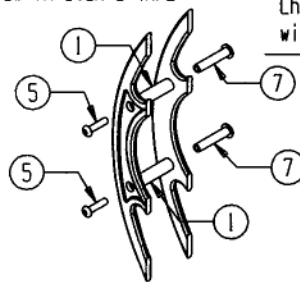
After drilling holes in your door, start assembling hardware to Pull Handle. Place item 1 inside reel flanges at mounting holes. Slide item 8 screw thru flange hole thru spacer and out the back side. Screw on item 2 and tighten. (for 1 3/4" thick doors add item 3 spacer). Now you are ready to mount Pull Handle to door. Place Pull Handle assembly into door, item 2 nut first. On the back side of Door screw in Item 6 thru finishing washer into Item 2 nut, and tighten.



See note above!

DOUBLE PULL HANDLE BACK TO BACK

Use the same instructions for single Pull Handle. Change the back side of door - replace item 4 & 6 with second Pull and use item 8 screw, and tighten.



FOR WOOD OR GLASS PANEL DOORS

If your door is a panel style, and you can not drill all of your holes in the door, you will need to cap the two outer holes with item 5 & 7. Place item 1 inside flange, slide in item 7 into item 1 (door side). Then screw in item 5 and tighten.